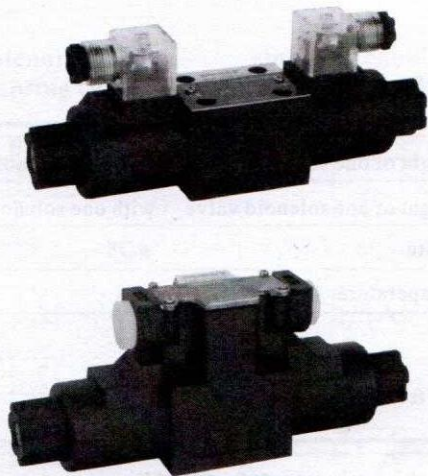


DSG-02 series solenoid operated directional valves

[Product Features]

1. The design of solenoid and runner process large electromagnetic suction, which make this product suitable for high pressure large flow.
2. The design of electromagnetic suction that matches the valve and improve the spring force makes this valve operated reliably in the polluted working environment.
3. Excellent electrical waterproof and dust-proof features
4. Solenoid coil, whose shell's protection class is IP65, and usually configuring DIN43650 IS04400 EN 175301-803 standard plug. Higher protection class AMP、DEUTSCH plugs can also be configured or using irradiation as the power line of the solenoid directly.



[Model Code]

DS	G	02	3C2	D24		B
Solenoid operated directional valves						
Sub-plate mounting						
Drift diameter : 02= size 6						
Functional symbol						
D12 D24=DC 12V 24V A110 A220=AC 110V/50Hz 220V/50Hz R110 R220=RAC 110V 220V						
With self-locking manual emergency push rod = NP With manual push rod = no marks						
H: DIN43650 plug B: terminal box						

[Technical Data]

General Data

The total weight of one solenoid valve (with two solenoids)	kg	1.94
The total weight of one solenoid valve (with one solenoid)	kg	1.50
Installation site		Optional position
Operating temperature	°C	-20~+50 (adopt NBR seal ring)

Hydraulic Data

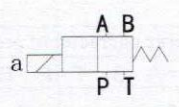
Maximum working oil pressure P、A and B	MPa	31.5
The highest dynamic oil pressure T cavity can bear	MPa	16
The highest static oil pressure T cavity can bear	l/min	20
Rated flow	l/min	63
Liquid medium		Mineral hydraulic oil, Phosphate hydraulic oil
The oil temperature range	°C	-20~+80
The oil cleanliness		ISO4572: β 10≥75 NAS1638:class9

Electrical Data

Voltage category		DC、RAC (coil with a rectifier component)				
Duty cycle	ED	100%				
Allowed voltage fluctuation range	%	-10~+10				
The reserving and reset time	ms	on 50 off40(do not include RAC type)				
Maximum reversing rate	Hz	3				
Coil insulation class		B				
The maximum operating temperature coil allowed	°C	130				
Coil weight	kg	0.30				
voltage	V	12	24	110	110	220
Power types		DC	DC	DC	RAC	RAC
Power frequency	Hz				50/60	50\60
Power consumption	W	34	34	34	36	36
Coil resistance (20°C)	ohm	4.2	16.5	346	64.6	258
Operating current (20°C)	A	2.8	1.45	0.31	0.42	0.21

slide valve spool symbol]

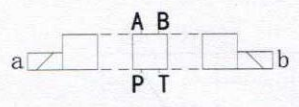
single solenoid valve
(spring return)



2B * BL

- 2
- 3
- 4
- 40
- 5
- 6
- 60
- 9
- 10
- 11
- 12

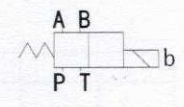
double solenoid valve
(three position, spring centralizing)



3C *

- 2
- 3
- 4
- 40
- 5
- 6
- 60
- 9
- 10
- 11
- 12

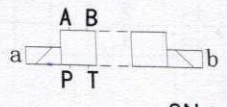
single solenoid valve
(spring return)



2B * B

- 2
- 3
- 4
- 40
- 5
- 6
- 60
- 9
- 10
- 11
- 12

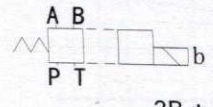
two position, without spring



2N *

- 2
- 3
- 4
- 7

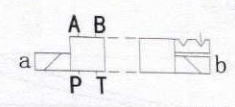
two position, spring return



2B *

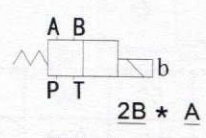
- 2
- 3
- 8

two position, mechanical locating



2D *

- 2



2B * A

- 2
- 3